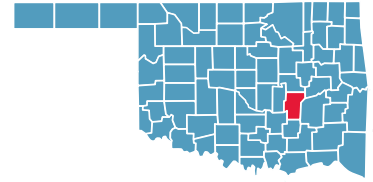


HUGHES COUNTY

County Seat: **Holdenville**



Number of Children (2005): **2,958**

Number of Poor Children (2004): **819**

Children are **21.4%** of the county population

Child Poverty Rate: **27.7%**

Economic Cluster: **#5, Poorest**

Indicator	Base Data	-	Worsened	Improved	+	Recent Data	Rank
BIRTHWEIGHT							
Low Birthweight (<5.5lbs)	4.6% of live births, 1994-96	-66.9%				7.6% of live births, 2003-05	37
Very Low Birthweight (<3 lbs, 5oz)	0.7% of live births, 1994-96	-109.7%				1.4% of live births, 2003-05	57
BIRTHS TO TEENS							
Births to Young Teens (ages 15-17)	43.5/1,000 girls 15-17, 1994-96					13.3% 37.7/1,000 girls 15-17, 2003-05	65
Births to Older Teens (ages 18-19)	139.5/1,000 girls 18-19, 1994-96					15.8% 117.4/1,000 girls 18-19, 2003-05	55
Births to Teens (ages 15-19)	73.3/1,000 girls 15-19, 1994-96					5.9% 68.9/1,000 girls 15-19, 2003-05	63
CHILD ABUSE & NEGLECT							
	11.9 confirmed/1,000 children, FY 1995-97	-138.5%				28.5 confirmed/1,000 children, FY 2004-06	71
HIGH SCHOOL DROPOUTS							
	4.7% youth <age 19, SY 2001/02-2003/04					19.1% 3.8% youth <age 19, SY 2003/04-2005/06	67
VIOLENT CRIME ARRESTS							
	444.8/100,000 youths 10-17, 1994-96					78.7% 94.9/100,000 youths 10-17, 2003-05	30
MORTALITY							
Infant Mortality (<age 1)	6.5/1,000 live births, 1994-96	-19.8%				7.8/1,000 live births, 2003-05	43
Child Death (ages 1-14)	27.3/100,000 children 1-14, 1994-96	-372.4%				129.2/100,000 children 1-14, 2003-05	76
Teen Death (ages 15-19)	69.4/100,000 teens 15-19, 1994-96	-227.0%				227.0/100,000 teens 15-19, 2003-05	73
Child & Teen Death (ages 1-19)	39.2/100,000 youth 1-19, 1994-96	-297.8%				156.1/100,000 youth 1-19, 2003-05	77
ECONOMIC CLUSTER							
	281 Economic Index, 1994-96					1.8% 276 Economic Index, 2003-05	73

■ state change

■ county change

= zero base - cannot calculate change

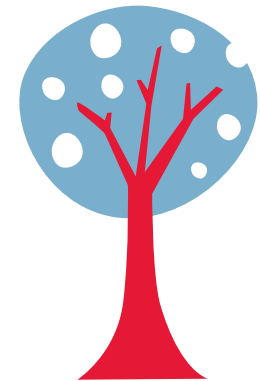
County Rank (1 = best) (77 = worst)

Changes of more than 100%—positive or negative—are graphed with broken bar

*Indicates a tie with at least one other county.

CHILDHOOD STRESS INDEX

Category / Indicator	Number	Rate	Rank
BIRTH / GENETIC / BIOLOGICAL			
Very Low Birthweight (2003-05)	2 avg annual	1.4%	57
Autism Reported on IEPs (ages 3-21, FFY 2005-07)	6 avg annual	1.9/1,000	56
ENVIRONMENTAL FACTORS			
Poverty (ages 0-17, 2004)	819	27.7%	69
Unemployment (2003-05)	n/a	8.2%	72*
EXPOSURE TO TRAUMA			
FEMA Disaster Declarations (Nov 2000-Aug 2007)	8	0.4/1,000 children	26
Adverse Childhood Experiences (ACE Index, 2006/07 Kids Count)	50.9	n/a	66
ACCESS TO TREATMENT			
Untreated by DMHSAS, OJA or Medicaid (ages 9-17, FY 2005-06)			
Untreated Mentally Ill & Substance-Abusers	135 avg annual	41.7%	13
Untreated Serious Emotional Disturbance	25 avg annual	12.5%	
Suicide (ages 5-24, 2003-05)	0 avg annual	0.0/100,000	1*



Childhood Stress Rank

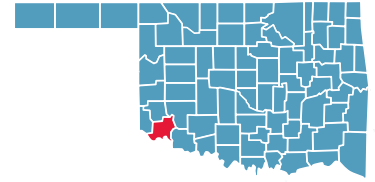
71

*Indicates a tie with at least one other county.

0.0%* or 0* indicates that, on average, services were provided to numbers of young clients which appear to serve all of the estimated need (prevalence) in the county

JACKSON COUNTY

County Seat: Altus



Number of Children (2005): 7,551

Number of Poor Children (2004): 1,583

Children are 28.5% of the county population

Child Poverty Rate: 21.0%

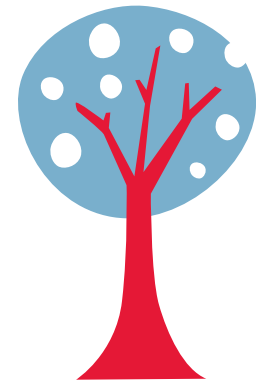
Economic Cluster: #2, Wealthier

Indicator	Base Data	-	Worsened	Improved	+	Recent Data	Rank
BIRTHWEIGHT							
Low Birthweight (<5.5lbs)	6.1% of live births, 1994-96	-57.9%				9.7% of live births, 2003-05	74
Very Low Birthweight (<3 lbs, 5oz)	0.8% of live births, 1994-96	-105.3%				1.6% of live births, 2003-05	64
BIRTHS TO TEENS							
Births to Young Teens (ages 15-17)	47.4/1,000 girls 15-17, 1994-96				19.8%	38.0/1,000 girls 15-17, 2003-05	66
Births to Older Teens (ages 18-19)	126.0/1,000 girls 18-19, 1994-96				7.1%	117.1/1,000 girls 18-19, 2003-05	51
Births to Teens (ages 15-19)	78.9/1,000 girls 15-19, 1994-96				13.6%	68.1/1,000 girls 15-19, 2003-05	60
CHILD ABUSE & NEGLECT							
	15.5 confirmed/1,000 children, FY 1995-97	-18.3%				18.3 confirmed/1,000 children, FY 2004-06	45
HIGH SCHOOL DROPOUTS							
	3.2% youth <age 19, SY 2001/02-2003/04	-15.6%				3.6% youth <age 19, SY 2003/04-2005/06	62
VIOLENT CRIME ARRESTS							
	182.4/100,000 youths 10-17, 1994-96				40.3%	108.9/100,000 youths 10-17, 2003-05	37
MORTALITY							
Infant Mortality (<age 1)	7.7/1,000 live births, 1994-96	-17.3%				9.1/1,000 live births, 2003-05	56
Child Death (ages 1-14)	23.7/100,000 children 1-14, 1994-96	-17.4%				27.8/100,000 children 1-14, 2003-05	33
Teen Death (ages 15-19)	157.7/100,000 teens 15-19, 1994-96				59.3%	64.1/100,000 teens 15-19, 2003-05	22
Child & Teen Death (ages 1-19)	57.0/100,000 youth 1-19, 1994-96				34.8%	37.2/100,000 youth 1-19, 2003-05	21
ECONOMIC CLUSTER							
	153 Economic Index, 1994-96				28.8%	109 Economic Index, 2003-05	23*

■ state change ■ county change ### = zero base - cannot calculate change County Rank (1 = best) (77 = worst)
 Changes of more than 100%—positive or negative—are graphed with broken bar *Indicates a tie with at least one other county.

CHILDHOOD STRESS INDEX

Category / Indicator	Number	Rate	Rank
BIRTH / GENETIC / BIOLOGICAL			
Very Low Birthweight (2003-05)	7 avg annual	1.6%	64
Autism Reported on IEPs (ages 3-21, FFY 2005-07)	15 avg annual	1.9/1,000	58
ENVIRONMENTAL FACTORS			
Poverty (ages 0-17, 2004)	1,583	21.0%	38*
Unemployment (2003-05)	n/a	3.8%	20
EXPOSURE TO TRAUMA			
FEMA Disaster Declarations (Nov 2000-Aug 2007)	8	0.9/1,000 children	48
Adverse Childhood Experiences (ACE Index, 2006/07 Kids Count)	32.3	n/a	38
ACCESS TO TREATMENT			
Untreated by DMHSAS, OJA or Medicaid (ages 9-17, FY 2005-06)			
Untreated Mentally Ill & Substance-Abusers	579 avg annual	74.7%	70*
Untreated Serious Emotional Disturbance	295 avg annual	61.2%	
Suicide (ages 5-24, 2003-05)	0 avg annual	4.2/100,000	34



Childhood Stress Rank

63

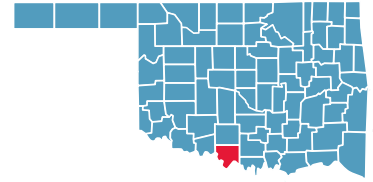
*Indicates a tie with at least one other county.

0.0%* or 0* indicates that, on average, services were provided to numbers of young clients which appear to serve all of the estimated need (prevalence) in the county



JEFFERSON COUNTY

County Seat: **Waurika**



Number of Children (2005): **1,434**

Number of Poor Children (2004): **361**

Children are **22.2%** of the county population

Child Poverty Rate: **25.6%**

Economic Cluster: **#5, Poorest**

Indicator	Base Data	-	Worsened	Improved	+	Recent Data	Rank
BIRTHWEIGHT							
Low Birthweight (<5.5lbs)	5.7% of live births, 1994-96	-49.4%				8.6% of live births, 2003-05	57
Very Low Birthweight (<3 lbs, 5oz)	1.6% of live births, 1994-96				75.1%	0.4% of live births, 2003-05	6
BIRTHS TO TEENS							
Births to Young Teens (ages 15-17)	23.2/1,000 girls 15-17, 1994-96	-84.0%				42.7/1,000 girls 15-17, 2003-05	70
Births to Older Teens (ages 18-19)	108.0/1,000 girls 18-19, 1994-96	-35.5%				146.3/1,000 girls 18-19, 2003-05	73
Births to Teens (ages 15-19)	47.9/1,000 girls 15-19, 1994-96	-71.7%				82.3/1,000 girls 15-19, 2003-05	75
CHILD ABUSE & NEGLECT							
	16.6 confirmed/1,000 children, FY 1995-97	-55.5%				25.9 confirmed/1,000 children, FY 2004-06	67
HIGH SCHOOL DROPOUTS							
	2.7% youth <age 19, SY 2001/02-2003/04				18.6%	2.2% youth <age 19, SY 2003/04-2005/06	29
VIOLENT CRIME ARRESTS							
	40.1/100,000 youths 10-17, 1994-96	-1,708.4%				724.3/100,000 youths 10-17, 2003-05	77
MORTALITY							
Infant Mortality (<age 1)	0.0/1,000 live births, 1994-96				###	11.7/1,000 live births, 2003-05	66
Child Death (ages 1-14)	101.9/100,000 children 1-14, 1994-96				41.8%	59.3/100,000 children 1-14, 2003-05	70
Teen Death (ages 15-19)	197.4/100,000 teens 15-19, 1994-96				59.5%	80.0/100,000 teens 15-19, 2003-05	34
Child & Teen Death (ages 1-19)	128.6/100,000 youth 1-19, 1994-96				49.5%	64.9/100,000 youth 1-19, 2003-05	59
ECONOMIC CLUSTER							
	190 Economic Index, 1994-96	-29.5%				246 Economic Index, 2003-05	66

■ state change

■ county change

= zero base - cannot calculate change

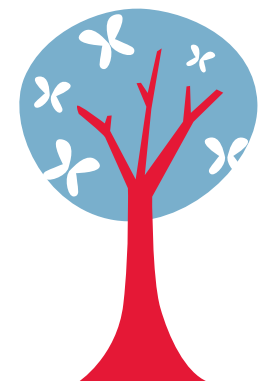
County Rank (1 = best) (77 = worst)

Changes of more than 100%—positive or negative—are graphed with broken bar

*Indicates a tie with at least one other county.

CHILDHOOD STRESS INDEX

Category / Indicator	Number	Rate	Rank
BIRTH / GENETIC / BIOLOGICAL			
Very Low Birthweight (2003-05)	0 avg annual	0.4%	6
Autism Reported on IEPs (ages 3-21, FFY 2005-07)	1 avg annual	0.9/1,000	15
ENVIRONMENTAL FACTORS			
Poverty (ages 0-17, 2004)	361	25.6%	58*
Unemployment (2003-05)	n/a	5.6%	54
EXPOSURE TO TRAUMA			
FEMA Disaster Declarations (Nov 2000-Aug 2007)	9	0.2/1,000 children	9
Adverse Childhood Experiences (ACE Index, 2006/07 Kids Count)	41.8	n/a	56
ACCESS TO TREATMENT			
Untreated by DMHSAS, OJA or Medicaid (ages 9-17, FY 2005-06)			
Untreated Mentally Ill & Substance-Abusers	84 avg annual	53.7%	28
Untreated Serious Emotional Disturbance	30 avg annual	30.8%	
Suicide (ages 5-24, 2003-05)	0 avg annual	0.0/100,000	1*



Childhood Stress Rank

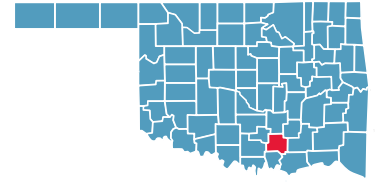
26

*Indicates a tie with at least one other county.

0.0%* or 0* indicates that, on average, services were provided to numbers of young clients which appear to serve all of the estimated need (prevalence) in the county

JOHNSTON COUNTY

County Seat: Tishomingo



Number of Children (2005): 2,369

Number of Poor Children (2004): 584

Children are 23.1% of the county population

Child Poverty Rate: 24.8%

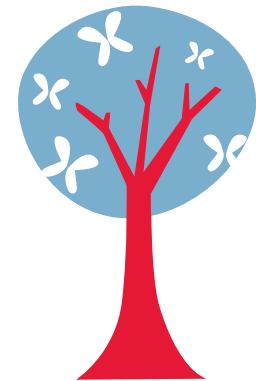
Economic Cluster: #5, Poorest

Indicator	Base Data	-	Worsened	Improved	+	Recent Data	Rank
BIRTHWEIGHT							
Low Birthweight (<5.5lbs)	8.0% of live births, 1994-96					8.2%	7.3% of live births, 2003-05 32
Very Low Birthweight (<3 lbs, 5oz)	0.8% of live births, 1994-96	-26.5%					1.0% of live births, 2003-05 27
BIRTHS TO TEENS							
Births to Young Teens (ages 15-17)	39.3/1,000 girls 15-17, 1994-96	-10.9%					43.5/1,000 girls 15-17, 2003-05 71
Births to Older Teens (ages 18-19)	68.5/1,000 girls 18-19, 1994-96	-65.8%					113.6/1,000 girls 18-19, 2003-05 47
Births to Teens (ages 15-19)	52.3/1,000 girls 15-19, 1994-96	-42.1%					74.3/1,000 girls 15-19, 2003-05 71
CHILD ABUSE & NEGLECT							
	13.2 confirmed/1,000 children, FY 1995-97	-144.1%					32.2 confirmed/1,000 children, FY 2004-06 75
HIGH SCHOOL DROPOUTS							
	2.9% youth <age 19, SY 2001/02-2003/04					8.2%	2.6% youth <age 19, SY 2003/04-2005/06 40
VIOLENT CRIME ARRESTS							
	178.8/100,000 youths 10-17, 1994-96					83.9%	28.9/100,000 youths 10-17, 2003-05 11
MORTALITY							
Infant Mortality (<age 1)	15.5/1,000 live births, 1994-96					68.4%	4.9/1,000 live births, 2003-05 16
Child Death (ages 1-14)	31.6/100,000 children 1-14, 1994-96	-68.8%					53.3/100,000 children 1-14, 2003-05 67
Teen Death (ages 15-19)	112.1/100,000 teens 15-19, 1994-96					22.2%	87.2/100,000 teens 15-19, 2003-05 38
Child & Teen Death (ages 1-19)	55.5/100,000 youth 1-19, 1994-96	-13.7%					63.1/100,000 youth 1-19, 2003-05 58
ECONOMIC CLUSTER							
	260 Economic Index, 1994-96					13.8%	224 Economic Index, 2003-05 62

■ state change ■ county change ### = zero base - cannot calculate change County Rank (1 = best) (77 = worst)
 Changes of more than 100%—positive or negative—are graphed with broken bar *Indicates a tie with at least one other county.

CHILDHOOD STRESS INDEX

Category / Indicator	Number	Rate	Rank
BIRTH / GENETIC / BIOLOGICAL			
Very Low Birthweight (2003-05)	1 avg annual	1.0%	27
Autism Reported on IEPs (ages 3-21, FFY 2005-07)	4 avg annual	1.5/1,000	43
ENVIRONMENTAL FACTORS			
Poverty (ages 0-17, 2004)	584	24.8%	54
Unemployment (2003-05)	n/a	5.0%	45
EXPOSURE TO TRAUMA			
FEMA Disaster Declarations (Nov 2000-Aug 2007)	8	0.3/1,000 children	22
Adverse Childhood Experiences (ACE Index, 2006/07 Kids Count)	46.2	n/a	61
ACCESS TO TREATMENT			
Untreated by DMHSAS, OJA or Medicaid (ages 9-17, FY 2005-06)			
Untreated Mentally Ill & Substance-Abusers	93 avg annual	35.7%	10
Untreated Serious Emotional Disturbance	0 avg annual	0.1%	
Suicide (ages 5-24, 2003-05)	1 avg annual	23.9/100,000	75



Childhood Stress Rank

tie for 47

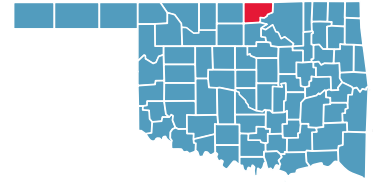
*Indicates a tie with at least one other county.

0.0%* or 0* indicates that, on average, services were provided to numbers of young clients which appear to serve all of the estimated need (prevalence) in the county



KAY COUNTY

County Seat: **Newkirk**



Number of Children (2005): **11,531**

Number of Poor Children (2004): **2,659**

Children are **24.8%** of the county population

Child Poverty Rate: **23.3%**

Economic Cluster: **#3, Middle**

Indicator	Base Data	-	Worsened	Improved	+	Recent Data	Rank	
BIRTHWEIGHT								
Low Birthweight (<5.5lbs)	5.6% of live births, 1994-96	-40.5%				7.9% of live births, 2003-05	47	
Very Low Birthweight (<3 lbs, 5oz)	1.0% of live births, 1994-96	-62.9%				1.6% of live births, 2003-05	68	
BIRTHS TO TEENS								
Births to Young Teens (ages 15-17)	42.8/1,000 girls 15-17, 1994-96					14.4%	36.6/1,000 girls 15-17, 2003-05	62
Births to Older Teens (ages 18-19)	157.9/1,000 girls 18-19, 1994-96					37.7%	98.4/1,000 girls 18-19, 2003-05	31
Births to Teens (ages 15-19)	86.0/1,000 girls 15-19, 1994-96					27.4%	62.5/1,000 girls 15-19, 2003-05	47
CHILD ABUSE & NEGLECT								
	20.0 confirmed/1,000 children, FY 1995-97	-27.7%				25.5 confirmed/1,000 children, FY 2004-06	63	
HIGH SCHOOL DROPOUTS								
	5.1% youth <age 19, SY 2001/02-2003/04	-22.9%				6.3% youth <age 19, SY 2003/04-2005/06	77	
VIOLENT CRIME ARRESTS								
	512.5/100,000 youths 10-17, 1994-96					15.2%	434.7/100,000 youths 10-17, 2003-05	75
MORTALITY								
Infant Mortality (<age 1)	10.1/1,000 live births, 1994-96					28.1%	7.3/1,000 live births, 2003-05	40
Child Death (ages 1-14)	16.9/100,000 children 1-14, 1994-96	-53.7%				26.0/100,000 children 1-14, 2003-05	32	
Teen Death (ages 15-19)	152.4/100,000 teens 15-19, 1994-96	-1.6%				154.9/100,000 teens 15-19, 2003-05	64	
Child & Teen Death (ages 1-19)	50.7/100,000 youth 1-19, 1994-96	-21.6%				61.7/100,000 youth 1-19, 2003-05	56	
ECONOMIC CLUSTER								
	119 Economic Index, 1994-96	-16.8%				139 Economic Index, 2003-05	32*	

■ state change

■ county change

= zero base - cannot calculate change

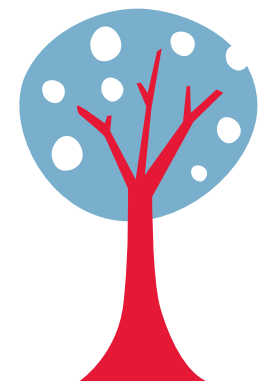
County Rank (1 = best) (77 = worst)

Changes of more than 100%—positive or negative—are graphed with broken bar

*Indicates a tie with at least one other county.

CHILDHOOD STRESS INDEX

Category / Indicator	Number	Rate	Rank
BIRTH / GENETIC / BIOLOGICAL			
Very Low Birthweight (2003-05)	11 avg annual	1.6%	68
Autism Reported on IEPs (ages 3-21, FFY 2005-07)	26 avg annual	2.1/1,000	66
ENVIRONMENTAL FACTORS			
Poverty (ages 0-17, 2004)	2,659	23.3%	48
Unemployment (2003-05)	n/a	6.5%	64
EXPOSURE TO TRAUMA			
FEMA Disaster Declarations (Nov 2000-Aug 2007)	8	1.4/1,000 children	61
Adverse Childhood Experiences (ACE Index, 2006/07 Kids Count)	38.5	n/a	48
ACCESS TO TREATMENT			
Untreated by DMHSAS, OJA or Medicaid (ages 9-17, FY 2005-06)			
Untreated Mentally Ill & Substance-Abusers	665 avg annual	54.5%	30
Untreated Serious Emotional Disturbance	228 avg annual	30.1%	
Suicide (ages 5-24, 2003-05)	0 avg annual	2.7/100,000	28



Childhood Stress Rank

75

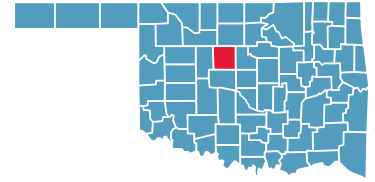
*Indicates a tie with at least one other county.

0.0%* or 0* indicates that, on average, services were provided to numbers of young clients which appear to serve all of the estimated need (prevalence) in the county



KINGFISHER COUNTY

County Seat: Kingfisher



Number of Children (2005): **3,393**

Number of Poor Children (2004): **461**

Children are **23.7%** of the county population

Child Poverty Rate: **13.5%**

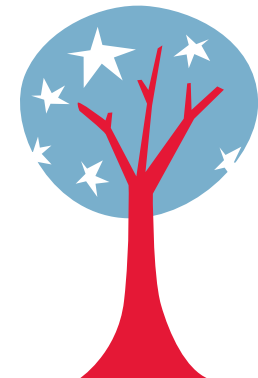
Economic Cluster: **#1, Wealthiest**

Indicator	Base Data	-	Worsened	Improved	+	Recent Data	Rank
BIRTHWEIGHT							
Low Birthweight (<5.5lbs)	4.6% of live births, 1994-96	-92.8%				9.0% of live births, 2003-05	67
Very Low Birthweight (<3 lbs, 5oz)	0.4% of live births, 1994-96	-171.5%				1.1% of live births, 2003-05	39
BIRTHS TO TEENS							
Births to Young Teens (ages 15-17)	27.3/1,000 girls 15-17, 1994-96				38.3%	16.9/1,000 girls 15-17, 2003-05	15
Births to Older Teens (ages 18-19)	100.5/1,000 girls 18-19, 1994-96				47.0%	53.2/1,000 girls 18-19, 2003-05	6
Births to Teens (ages 15-19)	50.6/1,000 girls 15-19, 1994-96				38.8%	31.0/1,000 girls 15-19, 2003-05	7
CHILD ABUSE & NEGLECT							
	8.8 confirmed/1,000 children, FY 1995-97				34.5%	5.8 confirmed/1,000 children, FY 2004-06	1
HIGH SCHOOL DROPOUTS							
	1.3% youth <age 19, SY 2001/02-2003/04				3.0%	1.3% youth <age 19, SY 2003/04-2005/06	12
VIOLENT CRIME ARRESTS							
	158.1/100,000 youths 10-17, 1994-96				87.2%	20.2/100,000 youths 10-17, 2003-05	10
MORTALITY							
Infant Mortality (<age 1)	6.1/1,000 live births, 1994-96				9.5%	5.5/1,000 live births, 2003-05	19
Child Death (ages 1-14)	32.8/100,000 children 1-14, 1994-96				61.0%	12.8/100,000 children 1-14, 2003-05	10
Teen Death (ages 15-19)	105.7/100,000 teens 15-19, 1994-96				9.8%	95.4/100,000 teens 15-19, 2003-05	46
Child & Teen Death (ages 1-19)	50.1/100,000 youth 1-19, 1994-96				27.2%	36.5/100,000 youth 1-19, 2003-05	17
ECONOMIC CLUSTER							
	40 Economic Index, 1994-96				5.0%	38 Economic Index, 2003-05	3

■ state change ■ county change ### = zero base - cannot calculate change County Rank (1 = best) (77 = worst)
 Changes of more than 100%—positive or negative—are graphed with broken bar *Indicates a tie with at least one other county.

CHILDHOOD STRESS INDEX

Category / Indicator	Number	Rate	Rank
BIRTH / GENETIC / BIOLOGICAL			
Very Low Birthweight (2003-05)	2 avg annual	1.1%	39
Autism Reported on IEPs (ages 3-21, FFY 2005-07)	11 avg annual	3.0/1,000	73
ENVIRONMENTAL FACTORS			
Poverty (ages 0-17, 2004)	461	13.5%	4
Unemployment (2003-05)	n/a	3.1%	6*
EXPOSURE TO TRAUMA			
FEMA Disaster Declarations (Nov 2000-Aug 2007)	9	0.4/1,000 children	27
Adverse Childhood Experiences (ACE Index, 2006/07 Kids Count)	5.0	n/a	2
ACCESS TO TREATMENT			
Untreated by DMHSAS, OJA or Medicaid (ages 9-17, FY 2005-06)			
Untreated Mentally Ill & Substance-Abusers	255 avg annual	68.6%	61*
Untreated Serious Emotional Disturbance	116 avg annual	50.1%	
Suicide (ages 5-24, 2003-05)	0 avg annual	0.0/100,000	1*



Childhood Stress Rank

14

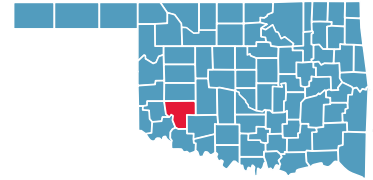
*Indicates a tie with at least one other county.

0.0%* or 0* indicates that, on average, services were provided to numbers of young clients which appear to serve all of the estimated need (prevalence) in the county



KIOWA COUNTY

County Seat: **Hobart**



Number of Children (2005): **2,159**

Number of Poor Children (2004): **536**

Children are **21.9%** of the county population

Child Poverty Rate: **25.1%**

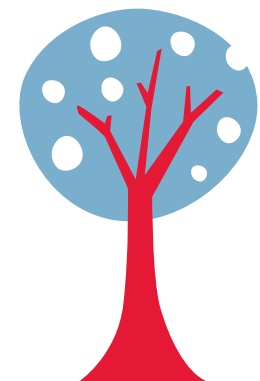
Economic Cluster: **#5, Poorest**

Indicator	Base Data	-	Worsened	Improved	+	Recent Data	Rank
BIRTHWEIGHT							
Low Birthweight (<5.5lbs)	8.6% of live births, 1994-96	-24.5%				10.8% of live births, 2003-05	75
Very Low Birthweight (<3 lbs, 5oz)	0.9% of live births, 1994-96	-31.1%				1.1% of live births, 2003-05	42
BIRTHS TO TEENS							
Births to Young Teens (ages 15-17)	40.0/1,000 girls 15-17, 1994-96	-17.9%				47.1/1,000 girls 15-17, 2003-05	75
Births to Older Teens (ages 18-19)	123.8/1,000 girls 18-19, 1994-96				13.6%	107.0/1,000 girls 18-19, 2003-05	43
Births to Teens (ages 15-19)	63.6/1,000 girls 15-19, 1994-96	-11.2%				70.7/1,000 girls 15-19, 2003-05	65
CHILD ABUSE & NEGLECT							
	21.6 confirmed/1,000 children, FY 1995-97				6.1%	20.3 confirmed/1,000 children, FY 2004-06	51
HIGH SCHOOL DROPOUTS							
	3.1% youth <age 19, SY 2001/02-2003/04				22.3%	2.4% youth <age 19, SY 2003/04-2005/06	36
VIOLENT CRIME ARRESTS							
	1,613.7/100,000 youths 10-17, 1994-96				92.3%	124.0/100,000 youths 10-17, 2003-05	40
MORTALITY							
Infant Mortality (<age 1)	0.0/1,000 live births, 1994-96				###	5.7/1,000 live births, 2003-05	23
Child Death (ages 1-14)	14.4/100,000 children 1-14, 1994-96	-38.4%				20.0/100,000 children 1-14, 2003-05	20
Teen Death (ages 15-19)	173.8/100,000 teens 15-19, 1994-96				100.0%	0.0/100,000 teens 15-19, 2003-05	1*
Child & Teen Death (ages 1-19)	54.2/100,000 youth 1-19, 1994-96				74.2%	14.0/100,000 youth 1-19, 2003-05	2
ECONOMIC CLUSTER							
	192 Economic Index, 1994-96	-8.3%				208 Economic Index, 2003-05	55*

■ state change ■ county change ### = zero base - cannot calculate change County Rank (1 = best) (77 = worst)
 Changes of more than 100%—positive or negative—are graphed with broken bar *Indicates a tie with at least one other county.

CHILDHOOD STRESS INDEX

Category / Indicator	Number	Rate	Rank
BIRTH / GENETIC / BIOLOGICAL			
Very Low Birthweight (2003-05)	1 avg annual	1.1%	42
Autism Reported on IEPs (ages 3-21, FFY 2005-07)	3 avg annual	1.1/1,000	22
ENVIRONMENTAL FACTORS			
Poverty (ages 0-17, 2004)	536	25.1%	55*
Unemployment (2003-05)	n/a	4.5%	33*
EXPOSURE TO TRAUMA			
FEMA Disaster Declarations (Nov 2000-Aug 2007)	11	0.2/1,000 children	12
Adverse Childhood Experiences (ACE Index, 2006/07 Kids Count)	46.3	n/a	62
ACCESS TO TREATMENT			
Untreated by DMHSAS, OJA or Medicaid (ages 9-17, FY 2005-06)			
Untreated Mentally Ill & Substance-Abusers	161 avg annual	67.8%	61*
Untreated Serious Emotional Disturbance	74 avg annual	50.2%	
Suicide (ages 5-24, 2003-05)	0 avg annual	0.0/100,000	1*



Childhood Stress Rank

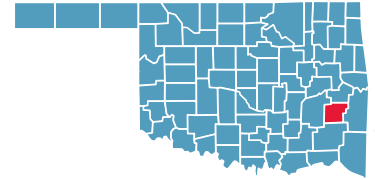
55

*Indicates a tie with at least one other county.

0.0%* or 0* indicates that, on average, services were provided to numbers of young clients which appear to serve all of the estimated need (prevalence) in the county

LATIMER COUNTY

County Seat: **Wilburton**



Number of Children (2005): **2,403**

Number of Poor Children (2004): **600**

Children are **22.6%** of the county population

Child Poverty Rate: **25.2%**

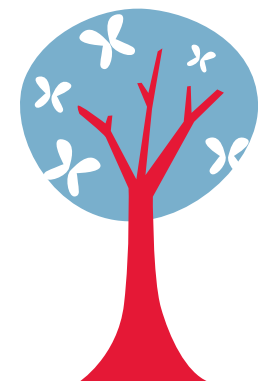
Economic Cluster: **#5, Poorest**

Indicator	Base Data	-	Worsened	Improved	+	Recent Data	Rank
BIRTHWEIGHT							
Low Birthweight (<5.5lbs)	3.2% of live births, 1994-96	-95.1%				6.3% of live births, 2003-05	13
Very Low Birthweight (<3 lbs, 5oz)	0.5% of live births, 1994-96	-309.8%				2.2% of live births, 2003-05	74
BIRTHS TO TEENS							
Births to Young Teens (ages 15-17)	46.3/1,000 girls 15-17, 1994-96				50.0%	23.1/1,000 girls 15-17, 2003-05	31
Births to Older Teens (ages 18-19)	80.9/1,000 girls 18-19, 1994-96				21.3%	63.7/1,000 girls 18-19, 2003-05	12
Births to Teens (ages 15-19)	63.4/1,000 girls 15-19, 1994-96				28.8%	45.1/1,000 girls 15-19, 2003-05	22
CHILD ABUSE & NEGLECT							
	12.1 confirmed/1,000 children, FY 1995-97	-39.8%				17.0 confirmed/1,000 children, FY 2004-06	37
HIGH SCHOOL DROPOUTS							
	1.0% youth <age 19, SY 2001/02-2003/04	-110.7%				2.1% youth <age 19, SY 2003/04-2005/06	28
VIOLENT CRIME ARRESTS							
	203.5/100,000 youths 10-17, 1994-96	-25.5%				255.5/100,000 youths 10-17, 2003-05	71
MORTALITY							
Infant Mortality (<age 1)	10.8/1,000 live births, 1994-96	-75.6%				19.0/1,000 live births, 2003-05	76
Child Death (ages 1-14)	45.7/100,000 children 1-14, 1994-96				23.2%	35.1/100,000 children 1-14, 2003-05	52
Teen Death (ages 15-19)	141.8/100,000 teens 15-19, 1994-96	-51.1%				214.4/100,000 teens 15-19, 2003-05	72
Child & Teen Death (ages 1-19)	74.6/100,000 youth 1-19, 1994-96	-26.3%				94.2/100,000 youth 1-19, 2003-05	71
ECONOMIC CLUSTER							
	266 Economic Index, 1994-96				20.3%	212 Economic Index, 2003-05	57

■ state change ■ county change ### = zero base - cannot calculate change County Rank (1 = best) (77 = worst)
 Changes of more than 100%—positive or negative—are graphed with broken bar *Indicates a tie with at least one other county.

CHILDHOOD STRESS INDEX

Category / Indicator	Number	Rate	Rank
BIRTH / GENETIC / BIOLOGICAL			
Very Low Birthweight (2003-05)	2 avg annual	2.2%	74
Autism Reported on IEPs (ages 3-21, FFY 2005-07)	2 avg annual	0.6/1,000	6
ENVIRONMENTAL FACTORS			
Poverty (ages 0-17, 2004)	600	25.2%	57
Unemployment (2003-05)	n/a	5.7%	55
EXPOSURE TO TRAUMA			
FEMA Disaster Declarations (Nov 2000-Aug 2007)	7	0.3/1,000 children	24
Adverse Childhood Experiences (ACE Index, 2006/07 Kids Count)	41.0	n/a	53*
ACCESS TO TREATMENT			
Untreated by DMHSAS, OJA or Medicaid (ages 9-17, FY 2005-06)			
Untreated Mentally Ill & Substance-Abusers	155 avg annual	57.1%	36
Untreated Serious Emotional Disturbance	56 avg annual	33.4%	
Suicide (ages 5-24, 2003-05)	0 avg annual	10.4/100,000	58



Childhood Stress Rank

tie for 39

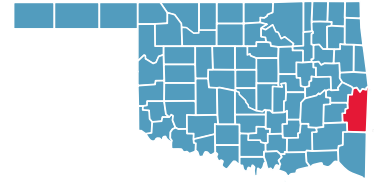
*Indicates a tie with at least one other county.

0.0%* or 0* indicates that, on average, services were provided to numbers of young clients which appear to serve all of the estimated need (prevalence) in the county



LE FLORE COUNTY

County Seat: Poteau



Number of Children (2005): **12,151**

Number of Poor Children (2004): **3,097**

Children are **24.5%** of the county population

Child Poverty Rate: **25.6%**

Economic Cluster: **#5, Poorest**

Indicator	Base Data	-	Worsened	Improved	+	Recent Data	Rank
BIRTHWEIGHT							
Low Birthweight (<5.5lbs)	6.3% of live births, 1994-96					3.0%	6.1% of live births, 2003-05 10
Very Low Birthweight (<3 lbs, 5oz)	1.1% of live births, 1994-96					35.5%	0.7% of live births, 2003-05 12
BIRTHS TO TEENS							
Births to Young Teens (ages 15-17)	39.4/1,000 girls 15-17, 1994-96	-0.4%					39.6/1,000 girls 15-17, 2003-05 68
Births to Older Teens (ages 18-19)	145.0/1,000 girls 18-19, 1994-96					9.2%	131.6/1,000 girls 18-19, 2003-05 68
Births to Teens (ages 15-19)	76.2/1,000 girls 15-19, 1994-96	-1.7%					77.5/1,000 girls 15-19, 2003-05 72
CHILD ABUSE & NEGLECT							
	28.8 confirmed/1,000 children, FY 1995-97					52.7%	13.6 confirmed/1,000 children, FY 2004-06 26
HIGH SCHOOL DROPOUTS							
	3.7% youth <age 19, SY 2001/02-2003/04					10.4%	3.4% youth <age 19, SY 2003/04-2005/06 52
VIOLENT CRIME ARRESTS							
	294.3/100,000 youths 10-17, 1994-96					69.3%	90.3/100,000 youths 10-17, 2003-05 26
MORTALITY							
Infant Mortality (<age 1)	6.9/1,000 live births, 1994-96	-12.5%					7.7/1,000 live births, 2003-05 42
Child Death (ages 1-14)	38.1/100,000 children 1-14, 1994-96					72.3%	10.6/100,000 children 1-14, 2003-05 8
Teen Death (ages 15-19)	82.0/100,000 teens 15-19, 1994-96	-60.4%					131.5/100,000 teens 15-19, 2003-05 58
Child & Teen Death (ages 1-19)	50.2/100,000 youth 1-19, 1994-96					13.3%	43.5/100,000 youth 1-19, 2003-05 31
ECONOMIC CLUSTER							
	223 Economic Index, 1994-96					0.4%	222 Economic Index, 2003-05 61

■ state change

■ county change

= zero base - cannot calculate change

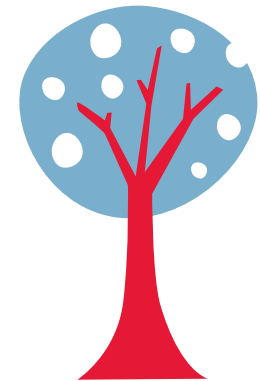
County Rank (1 = best) (77 = worst)

Changes of more than 100%—positive or negative—are graphed with broken bar

*Indicates a tie with at least one other county.

CHILDHOOD STRESS INDEX

Category / Indicator	Number	Rate	Rank
BIRTH / GENETIC / BIOLOGICAL			
Very Low Birthweight (2003-05)	5 avg annual	0.7%	12
Autism Reported on IEPs (ages 3-21, FFY 2005-07)	27 avg annual	2.1/1,000	65
ENVIRONMENTAL FACTORS			
Poverty (ages 0-17, 2004)	3,097	25.6%	58*
Unemployment (2003-05)	n/a	5.7%	56
EXPOSURE TO TRAUMA			
FEMA Disaster Declarations (Nov 2000-Aug 2007)	6	2.0/1,000 children	69
Adverse Childhood Experiences (ACE Index, 2006/07 Kids Count)	31.3	n/a	33
ACCESS TO TREATMENT			
Untreated by DMHSAS, OJA or Medicaid (ages 9-17, FY 2005-06)			
Untreated Mentally Ill & Substance-Abusers	790 avg annual	62.9%	44
Untreated Serious Emotional Disturbance	326 avg annual	41.8%	
Suicide (ages 5-24, 2003-05)	0 avg annual	0.0/100,000	1*



Childhood Stress Rank

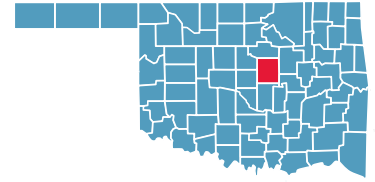
68

*Indicates a tie with at least one other county.

0.0%* or 0* indicates that, on average, services were provided to numbers of young clients which appear to serve all of the estimated need (prevalence) in the county

LINCOLN COUNTY

County Seat: **Chandler**



Number of Children (2005): **7,820**

Number of Poor Children (2004): **1,541**

Children are **24.2%** of the county population

Child Poverty Rate: **19.8%**

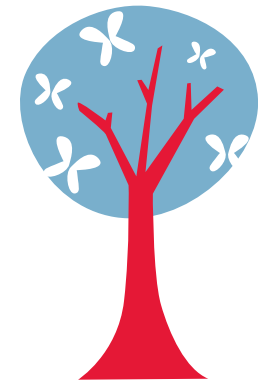
Economic Cluster: **#3, Middle**

Indicator	Base Data	-	Worsened	Improved	+	Recent Data	Rank
BIRTHWEIGHT							
Low Birthweight (<5.5lbs)	5.6% of live births, 1994-96	-46.4%				8.2% of live births, 2003-05	53
Very Low Birthweight (<3 lbs, 5oz)	1.1% of live births, 1994-96	-11.6%				1.2% of live births, 2003-05	48
BIRTHS TO TEENS							
Births to Young Teens (ages 15-17)	28.9/1,000 girls 15-17, 1994-96				42.3%	16.7/1,000 girls 15-17, 2003-05	14
Births to Older Teens (ages 18-19)	114.7/1,000 girls 18-19, 1994-96				4.9%	109.1/1,000 girls 18-19, 2003-05	46
Births to Teens (ages 15-19)	55.7/1,000 girls 15-19, 1994-96				10.0%	50.1/1,000 girls 15-19, 2003-05	24
CHILD ABUSE & NEGLECT							
	13.8 confirmed/1,000 children, FY 1995-97				29.9%	9.7 confirmed/1,000 children, FY 2004-06	10
HIGH SCHOOL DROPOUTS							
	2.0% youth <age 19, SY 2001/02-2003/04				8.7%	1.8% youth <age 19, SY 2003/04-2005/06	21
VIOLENT CRIME ARRESTS							
	177.9/100,000 youths 10-17, 1994-96				43.3%	100.9/100,000 youths 10-17, 2003-05	35
MORTALITY							
Infant Mortality (<age 1)	11.0/1,000 live births, 1994-96				18.1%	9.0/1,000 live births, 2003-05	54
Child Death (ages 1-14)	30.0/100,000 children 1-14, 1994-96				63.2%	11.0/100,000 children 1-14, 2003-05	9
Teen Death (ages 15-19)	97.1/100,000 teens 15-19, 1994-96				2.4%	94.8/100,000 teens 15-19, 2003-05	45
Child & Teen Death (ages 1-19)	47.8/100,000 youth 1-19, 1994-96				26.2%	35.3/100,000 youth 1-19, 2003-05	15
ECONOMIC CLUSTER							
	136 Economic Index, 1994-96	-11.0%				151 Economic Index, 2003-05	40*

■ state change ■ county change ### = zero base - cannot calculate change County Rank (1 = best) (77 = worst)
 Changes of more than 100%—positive or negative—are graphed with broken bar *Indicates a tie with at least one other county.

CHILDHOOD STRESS INDEX

Category / Indicator	Number	Rate	Rank
BIRTH / GENETIC / BIOLOGICAL			
Very Low Birthweight (2003-05)	5 avg annual	1.2%	48
Autism Reported on IEPs (ages 3-21, FFY 2005-07)	11 avg annual	1.4/1,000	33
ENVIRONMENTAL FACTORS			
Poverty (ages 0-17, 2004)	1,541	19.8%	30*
Unemployment (2003-05)	n/a	5.2%	48
EXPOSURE TO TRAUMA			
FEMA Disaster Declarations (Nov 2000-Aug 2007)	9	0.9/1,000 children	46
Adverse Childhood Experiences (ACE Index, 2006/07 Kids Count)	17.0	n/a	8
ACCESS TO TREATMENT			
Untreated by DMHSAS, OJA or Medicaid (ages 9-17, FY 2005-06)			
Untreated Mentally Ill & Substance-Abusers	596 avg annual	65.5%	55
Untreated Serious Emotional Disturbance	262 avg annual	46.4%	
Suicide (ages 5-24, 2003-05)	2 avg annual	18.7/100,000	72



Childhood Stress Rank

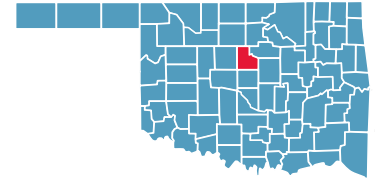
50

*Indicates a tie with at least one other county.
 0.0%* or 0* indicates that, on average, services were provided to numbers of young clients which appear to serve all of the estimated need (prevalence) in the county



LOGAN COUNTY

County Seat: **Guthrie**



Number of Children (2005): **8,157**

Number of Poor Children (2004): **1,442**

Children are **22.1%** of the county population

Child Poverty Rate: **17.7%**

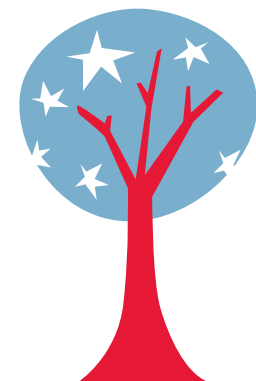
Economic Cluster: **#1, Wealthiest**

Indicator	Base Data	-	Worsened	Improved	+	Recent Data	Rank
BIRTHWEIGHT							
Low Birthweight (<5.5lbs)	8.2% of live births, 1994-96					14.7%	7.0% of live births, 2003-05 21
Very Low Birthweight (<3 lbs, 5oz)	1.0% of live births, 1994-96					11.6%	0.9% of live births, 2003-05 21
BIRTHS TO TEENS							
Births to Young Teens (ages 15-17)	29.6/1,000 girls 15-17, 1994-96					46.8%	15.7/1,000 girls 15-17, 2003-05 12
Births to Older Teens (ages 18-19)	53.2/1,000 girls 18-19, 1994-96					28.6%	38.0/1,000 girls 18-19, 2003-05 3
Births to Teens (ages 15-19)	41.0/1,000 girls 15-19, 1994-96					33.5%	27.3/1,000 girls 15-19, 2003-05 4
CHILD ABUSE & NEGLECT							
	10.4 confirmed/1,000 children, FY 1995-97					7.4%	9.6 confirmed/1,000 children, FY 2004-06 9
HIGH SCHOOL DROPOUTS							
	2.6% youth <age 19, SY 2001/02-2003/04					29.7%	1.9% youth <age 19, SY 2003/04-2005/06 25
VIOLENT CRIME ARRESTS							
	124.4/100,000 youths 10-17, 1994-96	-26.6%					157.4/100,000 youths 10-17, 2003-05 52
MORTALITY							
Infant Mortality (<age 1)	6.0/1,000 live births, 1994-96	-35.0%					8.1/1,000 live births, 2003-05 46
Child Death (ages 1-14)	48.1/100,000 children 1-14, 1994-96					66.2%	16.2/100,000 children 1-14, 2003-05 13
Teen Death (ages 15-19)	70.5/100,000 teens 15-19, 1994-96					14.7%	60.1/100,000 teens 15-19, 2003-05 20
Child & Teen Death (ages 1-19)	55.1/100,000 youth 1-19, 1994-96					42.6%	31.6/100,000 youth 1-19, 2003-05 12
ECONOMIC CLUSTER							
	92 Economic Index, 1994-96					4.3%	88 Economic Index, 2003-05 18

■ state change ■ county change ### = zero base - cannot calculate change County Rank (1 = best) (77 = worst)
 Changes of more than 100%—positive or negative—are graphed with broken bar *Indicates a tie with at least one other county.

CHILDHOOD STRESS INDEX

Category / Indicator	Number	Rate	Rank
BIRTH / GENETIC / BIOLOGICAL			
Very Low Birthweight (2003-05)	4 avg annual	0.9%	21
Autism Reported on IEPs (ages 3-21, FFY 2005-07)	9 avg annual	0.8/1,000	14
ENVIRONMENTAL FACTORS			
Poverty (ages 0-17, 2004)	1,442	17.7%	15
Unemployment (2003-05)	n/a	3.9%	23*
EXPOSURE TO TRAUMA			
FEMA Disaster Declarations (Nov 2000-Aug 2007)	10	0.8/1,000 children	45
Adverse Childhood Experiences (ACE Index, 2006/07 Kids Count)	10.6	n/a	5
ACCESS TO TREATMENT			
Untreated by DMHSAS, OJA or Medicaid (ages 9-17, FY 2005-06)			
Untreated Mentally Ill & Substance-Abusers	576 avg annual	63.1%	52
Untreated Serious Emotional Disturbance	282 avg annual	49.7%	51
Suicide (ages 5-24, 2003-05)	1 avg annual	8.6/100,000	51



Childhood Stress Rank

4

*Indicates a tie with at least one other county.
 0.0%* or 0* indicates that, on average, services were provided to numbers of young clients which appear to serve all of the estimated need (prevalence) in the county